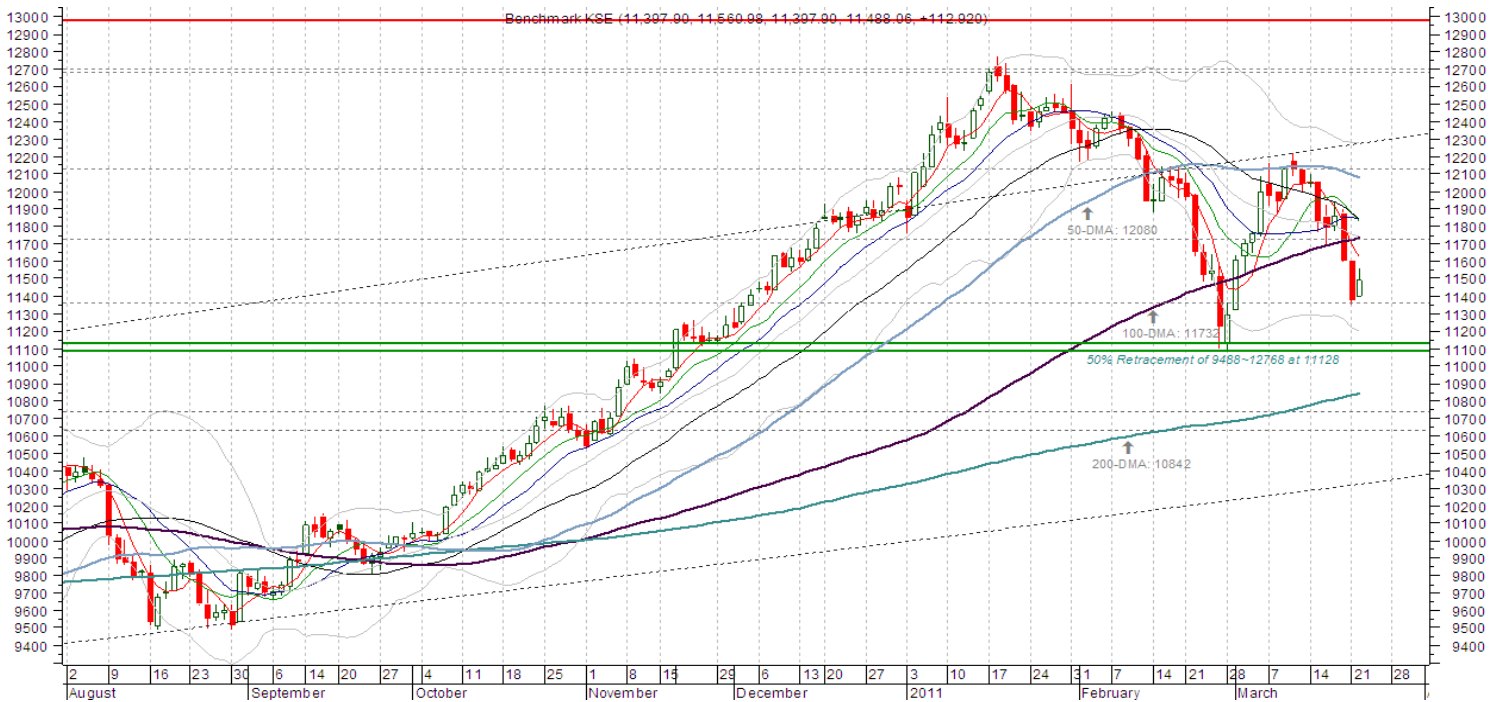




KSE 100-INDEX

CLOSE	HIGH	LOW	CHANGE	14-day RSI	50-DMA	100-DMA	200-DMA
11,488.06	11,560.98	11,397.90	+112.92/0.99%	38.33	12,080.35	11,732.42	10,842.35



Immediate downtrend would reverse above 11658-11677

SUPPORT LEVELS

- S1: 11,444-11,432
- S2: 11,353-11,346
- S3: 11,225-11,213

RESISTANCE LEVELS

- R1: 11,560
- R2: 11,658-11677
- R3: 11,768

Technical Profile

- Immediate: Neutral
- Short-term: Negative
- Intermediate: Neutral

The benchmark KSE recovered 0.99 percent, or 112.92 points on Tuesday to settle at 11488.06 level, with turnover of 52.28mn shares against 47.64mn shares traded a day earlier.

The emergence of a candlesticks harami at 76.4 percent retracement (11346) of Feb 28 to March 10 recovery (11077-12218) depict that the decline is exhausting itself --Neutral. In immediate term, a break (close) above 11658-11677 is required to enable minor strength to 11850, which could further stretch towards 12125-12161 points. Relapse below 11432 will expose minor weakness to 11353-11346. Below there, continuation would target 11225-11213 points.

Markets are seldom wrong: men often are --Roy Longstreet

Daily PIVOTS

Ticker	Close	Previous Close	% Change	9-DMA	30-DMA	14-RSI	RESISTANCE			PIVOT	SUPPORT		
							R1	R2	R3		S1	S2	S3
AKBL	12.61	12.06	4.53	12.54	13.18	41.34	12.86	13.10	13.47	12.49	12.25	11.88	11.64
ATRL	121.40	117.98	2.90	119.96	115.43	54.39	123.40	125.40	127.80	121.00	119.00	116.60	114.60
ANL	9.13	8.95	2.01	9.07	9.57	44.56	9.40	9.67	9.89	9.18	8.91	8.69	8.42
BAHL	27.83	27.18	2.39	27.54	28.03	48.33	28.12	28.42	28.80	27.74	27.44	27.06	26.76
BAFL	9.96	9.40	5.96	9.37	9.91	53.27	10.19	10.43	10.78	9.84	9.60	9.25	9.01
BOP	6.63	6.69	-0.90	6.98	7.36	32.27	6.83	7.02	7.15	6.70	6.51	6.38	6.19
DGKC	23.63	23.08	2.38	23.61	24.02	44.32	23.93	24.23	24.59	23.57	23.27	22.91	22.61
EFUG	35.50	36.14	-1.77	36.36	36.76	41.72	36.59	37.69	38.48	35.80	34.70	33.91	32.81
EFUL	59.20	58.95	0.42	59.84	57.95	48.79	59.97	60.73	61.22	59.48	58.72	58.23	57.47
ENGRO	198.37	196.44	0.98	195.45	183.71	65.44	199.91	201.46	202.41	198.96	197.41	196.46	194.91
FFC	128.85	126.41	1.93	130.26	122.31	58.87	130.19	131.54	133.08	128.65	127.30	125.76	124.41
FFBL	39.04	38.75	0.75	39.27	38.17	55.10	39.39	39.75	40.04	39.10	38.74	38.45	38.09
HBL	106.02	106.98	-0.90	108.48	106.55	47.26	107.58	109.14	110.38	106.34	104.78	103.54	101.98
HMB	18.33	22.25	-17.64	19.18	19.96	30.55	18.91	19.50	19.83	18.58	17.99	17.66	17.08
HUBC	36.55	36.42	0.36	37.16	36.23	49.62	36.97	37.38	37.67	36.68	36.27	35.98	35.57
ICI	164.98	163.71	0.78	163.37	154.57	62.73	166.88	168.78	170.07	165.59	163.69	162.40	160.50
JACL	8.79	8.66	1.50	9.00	9.62	38.63	9.06	9.32	9.62	8.76	8.50	8.20	7.94
LUCK	63.99	63.07	1.46	66.34	66.36	40.42	65.08	66.16	66.88	64.36	63.28	62.56	61.48
MCB	194.34	192.72	0.84	197.34	193.31	47.62	196.76	199.18	200.96	194.98	192.56	190.78	188.36
MLCF	2.34	2.30	1.74	2.29	2.36	48.68	2.39	2.45	2.49	2.35	2.29	2.25	2.19
MARI	108.20	107.26	0.88	108.24	111.46	41.97	110.91	113.63	115.25	109.29	106.57	104.95	102.23
MEBL	16.82	16.60	1.33	16.64	16.08	57.30	17.03	17.25	17.51	16.77	16.55	16.29	16.07
NBP	55.99	53.33	4.99	56.29	54.33	52.86	56.37	56.75	57.51	55.61	55.23	54.47	54.09
NIB	2.04	2.00	2.00	2.06	2.35	33.66	2.09	2.15	2.19	2.05	1.99	1.95	1.89
NETSOL	21.85	21.72	0.60	22.31	22.65	43.49	22.08	22.31	22.47	21.92	21.69	21.53	21.30
NML	63.75	62.92	1.32	63.83	63.21	50.23	64.20	64.65	65.00	63.85	63.40	63.05	62.60
OGDC	137.86	135.63	1.64	146.79	155.92	26.19	139.81	141.76	144.02	137.55	135.60	133.34	131.39
POL	314.80	312.17	0.84	316.88	309.76	51.80	317.25	319.70	321.30	315.65	313.20	311.60	309.15
PRL	96.43	97.22	-0.81	101.10	98.58	44.77	99.08	101.74	103.22	97.60	94.94	93.46	90.80
PAKRI	17.13	17.03	0.59	17.70	16.72	50.85	17.35	17.58	17.70	17.23	17.00	16.88	16.65
PSO	273.97	270.44	1.31	278.37	276.67	44.07	276.65	279.33	281.66	274.32	271.64	269.31	266.63
PPL	201.20	200.01	0.59	207.15	203.07	44.20	203.29	205.39	206.81	201.87	199.77	198.35	196.25
PTC	16.80	16.68	0.72	17.41	17.98	31.89	16.97	17.13	17.27	16.83	16.67	16.53	16.37
SCBPL	8.65	8.99	-3.78	9.01	7.89	56.73	8.90	9.14	9.29	8.75	8.51	8.36	8.12
SNGP	20.27	19.87	2.01	20.30	22.11	33.24	20.60	20.94	21.36	20.18	19.84	19.42	19.08
SSGC	23.64	23.29	1.50	24.41	25.02	43.21	24.16	24.68	25.06	23.78	23.26	22.88	22.36
UBL	59.08	58.10	1.69	58.91	58.92	48.82	59.82	60.56	61.22	59.16	58.42	57.76	57.02
KSE 100	11488.06	11375.14	0.99	11796.48	11846.28	38.33	11566.73	11645.39	11729.81	11482.31	11403.65	11319.23	11240.57

StockSnap

Ticker	Close	Prev. Close	%Chg	Volume	RSI (14)	5 DMA	10 DMA	15 DMA	30 DMA	50 DMA	100 DMA	200 DMA	250 Day High	250 Day Low	Minor Trend
AICL	72.48	76.29	(4.99)	1,081,970	31.47	77.50	78.97	79.35	80.74	85.48	83.62	79.92	116.55	63.00	Negative
ABL	59.13	57.68	2.51	30,919	48.87	58.90	59.05	59.29	59.42	61.00	57.87	52.30	65.45	42.28	Negative
ATRL	121.4	117.98	2.90	1,234,828	54.39	121.13	119.98	118.75	115.43	123.30	121.76	103.30	146.90	73.47	Positive
ANL	9.13	8.95	2.01	4,003,064	44.56	9.04	9.09	9.09	9.57	10.18	10.37	10.61	16.67	8.05	Negative
BAHL	27.83	27.18	2.39	165,749	48.33	27.46	27.59	27.76	28.03	28.66	27.77	26.10	31.24	22.29	Negative
BAFL	9.96	9.4	5.96	3,616,983	53.27	9.43	9.36	9.51	9.91	10.50	10.36	9.61	12.20	7.32	Negative
DGKC	23.63	23.08	2.38	708,732	44.32	23.26	23.68	23.69	24.02	25.70	26.76	25.59	30.92	20.28	Negative
EFUG	35.5	36.14	(1.77)	14,698	41.72	36.14	36.44	36.10	36.76	38.68	41.51	43.32	81.40	32.25	Positive
ENGRO	198.37	196.44	0.98	1,946,812	65.44	197.06	195.50	191.39	183.71	180.73	166.89	155.48	202.50	132.92	Positive
FFC	128.85	126.41	1.93	1,670,550	58.87	128.26	130.47	128.10	122.31	119.92	104.58	91.85	135.50	73.68	Positive
FFBL	39.04	38.75	0.75	2,141,103	55.10	39.08	39.36	39.13	38.17	37.95	34.08	28.23	40.50	18.95	Negative
HBL	106.02	106.98	(0.90)	243,634	47.26	107.84	108.66	108.53	106.55	106.82	101.12	92.62	113.18	75.23	Negative
HMB	18.325	22.25	(17.64)	246,634	30.55	18.77	19.28	19.40	19.96	20.97	20.70	18.95	24.40	15.02	Negative
HUBC	36.55	36.42	0.36	929,122	49.62	37.13	37.18	37.10	36.23	36.32	34.90	32.36	38.70	25.55	Positive
ICI	164.98	163.71	0.78	173,676	62.73	165.63	162.97	161.64	154.57	152.69	144.98	131.24	170.75	104.00	Positive
INDU	210	207.26	1.32	21,553	21.12	211.16	216.60	218.24	240.17	258.51	253.03	242.19	304.73	191.00	Negative
JSCL	8.79	8.66	1.50	2,078,469	38.63	8.89	9.04	9.13	9.62	10.40	10.97	11.25	23.60	8.01	Negative
KAPCO	40.67	40.52	0.37	44,035	51.09	40.71	40.95	41.05	40.33	40.49	38.89	37.48	42.85	33.40	Negative
LUCK	63.99	63.07	1.46	1,051,093	40.42	65.05	66.51	66.24	66.36	69.20	72.06	67.91	80.31	54.00	Negative
MCB	194.34	192.72	0.84	733,299	47.62	194.12	198.00	197.03	193.31	199.75	194.89	182.24	224.98	149.13	Negative
MARI	108.2	107.26	0.88	108,693	41.97	107.82	108.33	107.52	111.46	118.58	119.09	120.13	160.55	97.12	Positive
MEBL	16.82	16.6	1.33	43,910	57.30	16.82	16.62	16.44	16.08	16.22	15.06	14.02	17.65	12.00	Positive
NRL	285.76	284.84	0.32	81,396	50.45	287.53	288.23	288.56	279.66	292.19	274.87	225.10	335.00	140.10	Negative
NBP	55.99	53.328	4.99	3,242,326	52.86	55.70	56.42	56.56	54.33	55.01	52.34	49.36	59.42	41.84	Negative
NIB	2.04	2	2.00	1,353,810	33.66	2.03	2.07	2.12	2.35	2.57	2.73	2.85	5.23	1.90	Negative
NML	63.75	62.92	1.32	888,604	50.23	63.78	63.90	64.00	63.21	64.91	61.92	53.16	71.89	38.31	Negative
OGDC	137.86	135.63	1.64	842,648	26.19	141.60	147.80	149.68	155.92	162.80	163.12	151.82	185.00	117.80	Negative
PKGS	112.11	114.98	(2.50)	1,461	39.92	114.39	114.43	114.56	117.01	122.63	117.92	116.19	143.00	98.00	Negative
POL	314.8	312.17	0.84	1,786,159	51.80	316.32	317.26	317.46	309.76	313.85	289.32	244.83	331.50	180.40	Negative
PAKRI	17.13	17.03	0.59	255,003	50.85	17.52	17.67	17.27	16.72	17.14	16.55	16.27	27.89	12.50	Positive
PSO	273.97	270.44	1.31	241,847	44.07	275.88	279.25	281.18	276.67	283.62	281.70	268.74	313.70	223.10	Negative
PAKT	93.89	90.02	4.30	1,503	37.90	93.69	98.05	98.32	101.72	107.34	110.50	109.83	126.50	0.00	Negative
PPL	201.2	200.01	0.59	963,673	44.20	204.53	207.48	207.56	203.07	206.85	202.99	181.13	224.80	134.21	Negative
PTC	16.8	16.68	0.72	1,475,949	31.89	17.10	17.47	17.61	17.98	18.50	18.89	18.75	20.74	16.50	Negative
SNGP	20.27	19.87	2.01	347,709	33.24	20.00	20.42	20.51	22.11	24.27	26.32	26.67	34.60	19.50	Negative
UBL	59.08	58.1	1.69	696,481	48.82	58.05	59.18	59.67	58.92	60.93	59.28	54.59	66.65	44.00	Negative